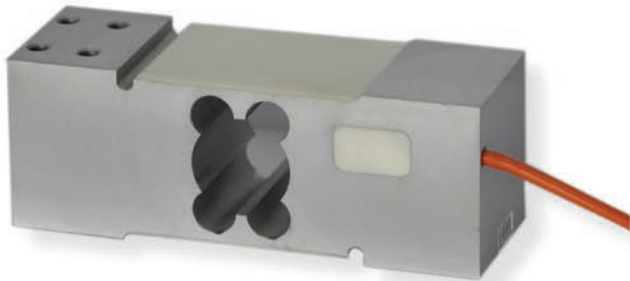
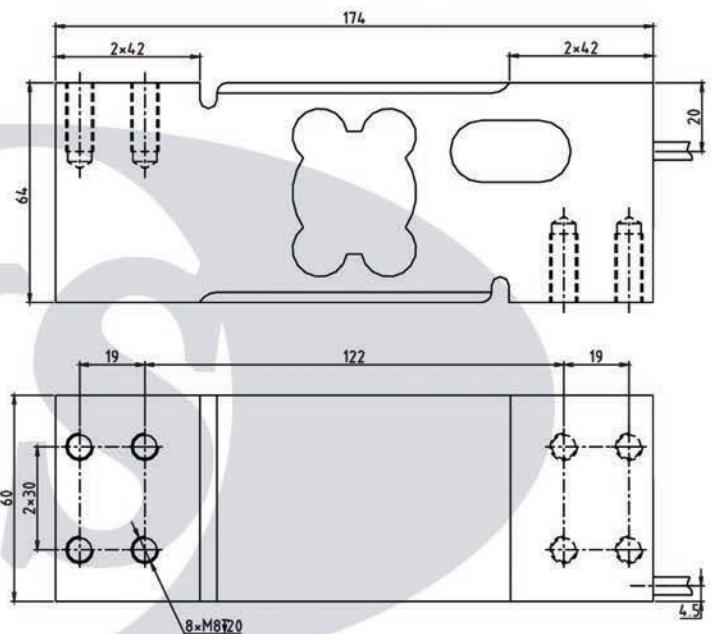
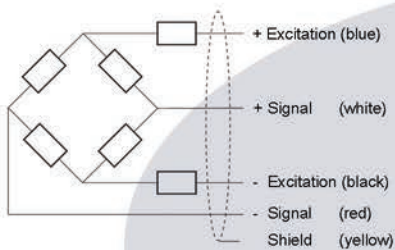


# MK - SPB



### FEATURE:

- Medium to high capacity versatile single point load cell
- Suitable for most simple weighing scale in industrial use
- Typical applications often include bench scale, packaging machines, filling machines, industrial process control
- Use high quality anodize aluminium



## SPECIFICATION

Rated capacities (E <sub>max</sub> )	50,100,150,200,250,300,350, 500,600,750,800kg	Temperature range, compensated	-10°C~+40°C
Sensitivity	2.0±0.2mV/V	Temperature range, operating	-20°C~+50°C
Accuracy class	OIML C3	Maximum safe overload	150%E <sub>max</sub>
Creep error (30min)	±166ppm	Ultimate overload	300%E <sub>max</sub>
Zero balance	±3%E <sub>max</sub>	Excitation, recommended	10V DC
TC ZERO	±17.5ppm/°C	Excitation, maximum	15V DC
TC SPAN	+20°C~+40°C,±17.5ppm/°C	Protection class	IP65
	-10°C~+20°C,±11.67ppm/°C	Construction	Aluminium Anodized
Input resistance	404±15Ω	Cable	Length:1.8m
Output resistance	350±3Ω		Diameter: Φ 5mm
Insulation resistance	≥2000MΩ (50V DC)	Installation torque, recommended	25N·m
Max platform size	600x600mm		