



FEATURES

- OIML C3 approved (OIML R60)
- Protection class IP66

OPTIONS

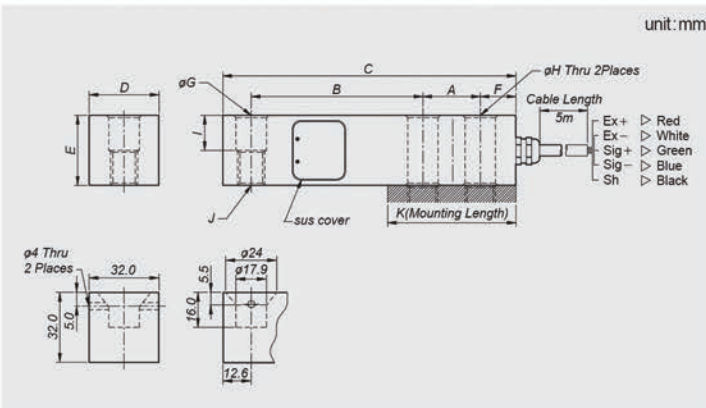
- OIML C3 approved
- Pivot end loading version (-Tend)



SPECIFICATIONS

Max. capacity	kgf	250, 500, 1tf, 2tf, 3tf, 5tf	
Rated output	mV/V	3.0 ± 0.0075	
Zero balance	mV/V	0 ± 0.03	
Accuracy class		D3	C3
Combined error	%	0.03	0.025
Repeatability	%	0.01	0.01
Creep for 30min.	%	0.03	0.017
Temperature effect on			
Zero Value	%/10°C	0.028	0.014
Output value	%/10°C	0.015	0.011
Excitation			
Recommended	V	10	
Maximum	V	15	
Resistance			
Input	Ω	350 ± 3.5	
Output	Ω	350 ± 3.5	
Insulation	MΩ	> 2,000	
Compensated temperature range	°C	-10 to +40	
Operating temperature range	°C	-30 to +80	

DIMENSIONS



Material

Nickel plated steel

Mounting

Capacity	Hexagon head-Bolt	Tightening torque
250kgf - 2tf	M12 × 1.75(10.9)	100Nm
3tf - 5tf	M18 × 1.5(10.9)	350Nm

Cable

Braided shield 4-wire round cable with Urethane-jacket

Mounting Accessory

BSA-TW

Model	Capacity	A	B	C	D	E	F	G	H	I	J	K
BSA-250L	250kgf	25.4	76.2	130	32	32	15.8	13.5	13.5	16.0	M12 × 1.75	52
BSA-500L	500kgf											
BSA-1	1tf											
BSA-2	2tf	38.1	95.3	171.5	38	38	19	20	20	19	M18 × 1.5	76.2
BSA-3	3tf											
BSA-5	5tf											